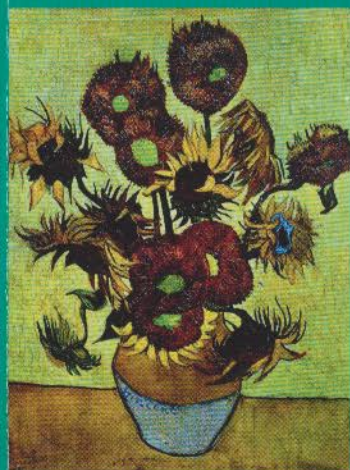


Journal of
Obstetric,
Gynecologic, &
Neonatal Nursing

JOGNN

*Scholarship for the Care of Women,
Childbearing Families, & Newborns*

May 2023
Volume 52 • Number 3



EDITORIALS

Use of Artificial Intelligence to Improve
Women's Health and Enhance Nursing
Care

Thoughts on Writing High-Quality Review
Articles

COLUMNS

STATISTICS IN NURSING RESEARCH

Alternatives to Reporting Statistically and
Clinically Meaningful Results

CURRENT EVIDENCE TO GUIDE PRACTICE, POLICY, AND RESEARCH

Paid Parental Leave Policies

REVIEW

Scoping Review of Biological and
Behavioral Effects of Babywearing on
Mothers and Infants

RESEARCH

Qualitative Study of the Experience of
Caring for Women During Labor and Birth
During the First Wave of the COVID-19
Pandemic

Attitudes of Clinicians and Patient Safety
Culture Before and After the ARRIVE Trial

Effects of 3D-Printed Models and 3D
Printed Pictures on Maternal- and
Paternal-Fetal Attachment, Anxiety, and
Depression

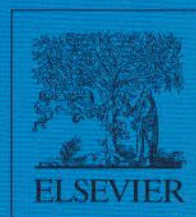
Prenatal Care Experiences of
Childbearing People With Disabilities in
Ontario, Canada

PRINCIPLES & PRACTICE

Release of Oxytocin and Cortisol Is
Associated With Neurobehavioral Patterns
in Premature Infants

AWHONN PRACTICE BRIEF

Management of Newborns With In Utero
Substance Exposure: AWHONN Practice
Brief Number 18





EDITORIALS

169 Use of Artificial Intelligence to Improve Women's Health and Enhance Nursing Care

Artificial intelligence has the potential to transform how health care is delivered by making it more efficient, effective, and personalized.

Joyce K. Edmonds

172 Thoughts on Writing High-Quality Review Articles

The Associate Editor provides useful suggestions for authors on writing review articles.

Elizabeth Eisenhauer

COLUMNS

STATISTICS FOR NURSING RESEARCH

178 Alternatives to Reporting Statistically and Clinically Meaningful Results

Alternatives to the use of $p < .05$ in nursing research include effect sizes, second generation p values, and Bayesian methods for statistical inference.

Oliwier Dziadkowiec

CURRENT EVIDENCE TO GUIDE PRACTICE, POLICY, AND RESEARCH

182 Paid Parental Leave Policies

The author provides current evidence on parental leave policies in the United States and the relatively recent introduction of paid parental leave across states.

Summer Sherburne Hawkins

REVIEW

191 Scoping Review of Biological and Behavioral Effects of Babywearing on Mothers and Infants

The authors synthesize the current literature on the biological and behavioral effects of babywearing and conclude that more research is needed to make recommendations for practice.

Lisa M. Grisham, Lela Rankin, Jocelyn A. Maurer, Sheila M. Gephart, and Alecca F. Bell

RESEARCH

202 Qualitative Study of the Experience of Caring for Women During Labor and Birth During the First Wave of the COVID-19 Pandemic

Addressing the possible mental health needs of maternity care team members who cared for COVID-19-positive mothers is a priority.

Shannon D. Simonovich, Nichelle M. Bush, Lucy Mueller Wiesemann, and Maria Pinerros-Leano

211 Attitudes of Clinicians and Patient Safety Culture Before and After the ARRIVE Trial

Interprofessional discordance in attitudes about elective induction of labor in hospitals without strong patient safety cultures is a risk factor for breakdown in teamwork and communication.

Emily White VanGompel, Francesca Carlock, Lavisha Singh, Emma Keer, Jill Brown, and Lisa Kane Low

223 Effects of 3D-Printed Models and 3D Printed Pictures on Maternal- and Paternal-Fetal Attachment, Anxiety, and Depression

3D-printed models and 3D printed pictures equally improved parental-fetal attachment, anxiety, and depression.

John Joseph Coté, Denise Côté-Arsenault, Jonathan E. Handelzalts, Amy S. Badura-Brack, Megan Kalata, Ryan W. Walters, Pooja Kasinath, Dorothy A. Kump, Kelly Herbig, and Rajesh Tampi

235 Prenatal Care Experiences of Childbearing People With Disabilities in Ontario, Canada

Participants with disabilities experienced unmet accommodation needs, fragmented care, and ableism during pregnancy, all of which could be mitigated by disability-related training for care providers.

Lesley A. Tarasoff, Gul Saeed, Yona Lunsky, Kate Welsh, Laurie Proulx, Susan M. Havercamp, Susan L. Parish, and Hilary K. Brown

Continued

On Our Cover:

Vincent van Gogh. *Sunflowers*. 1889. Van Gogh Museum. Photo credit: Album/Art Resource, NY.

PRINCIPLES & PRACTICE

248 Release of Oxytocin and Cortisol Is Associated With Neurobehavioral Patterns in Premature Infants

These findings are an important step in exploring oxytocin as a biomarker to improve infant neurobehavioral functioning.

Dorothy Vittner, Amy D'Agata, Byeong Yeob Choi, and Jacqueline McGrath

AWHONN PRACTICE BRIEF

e1 Management of Newborns With In Utero Substance Exposure: AWHONN Practice Brief Number 18

An official practice brief from the Association of Women's Health, Obstetric and Neonatal Nurses.

ARTICLES ONLINE

Access these and all articles at <http://jognn.org>.