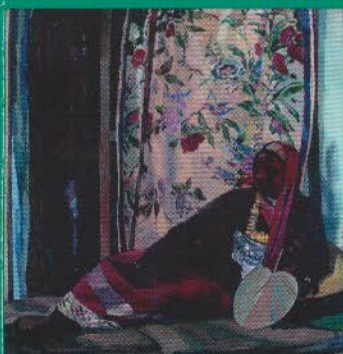


Journal of
Obstetric,
Gynecologic, &
Neonatal Nursing

JOGNN

*Scholarship for the Care of Women,
Childbearing Families, & Newborns*

July 2023
Volume 52 • Number 4



EDITORIAL

TdW4 L0LJ0w0E: Birthing Together

COLUMNS

INTERPRETATIONS OF CURRENT MATERNAL AND NEONATAL RESEARCH TRIALS

Effect of Timing of Second-Stage
Pushing on Pelvic Floor Morbidity After
Birth

CURRENT EVIDENCE TO GUIDE PRACTICE, POLICY, AND RESEARCH

Telehealth in the Prenatal and Postpartum
Periods

CRITICAL COMMENTARY

Call for a More Specific Diagnosis of
Infant of a Diabetic Mother to Optimize
Neonatal Care

RESEARCH

Three Missed Critical Nursing Care
Processes on Labor and Delivery Units
During the COVID-19 Pandemic

Influence of the Quality of Antenatal Care
on Early Breastfeeding Initiation and
Exclusive Breastfeeding Among Haitian
Women

Knowledge of Postbirth Warning Signs
and Postpartum Education Among
Women in Ghana

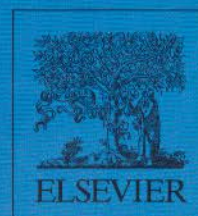
METHODS

Establishment of a Community Advisory
Board to Address Postpartum Depression
Among Indigenous Women

AWHONN POSITION STATEMENTS

The Use of Licensed Practice/Vocational
Nurses in Clinical Settings

Nursing Workforce Diversity





EDITORIAL

257 TdWɔ̃ ɬɛɬɔ̃ɔ̃ɔ̃ɔ̃: Birthing Together

The authors propose a shift in the approach to maternal health care for American Indian and Alaska Native women.

Andrea J. Carpitcher, Misha Severson, and Joyce Edmonds

COLUMNS

INTERPRETATIONS OF CURRENT MATERNAL AND NEONATAL RESEARCH TRIALS

260 Effect of Timing of Second-Stage Pushing on Pelvic Floor Morbidity After Birth

The author describes a recent trial on the effect of the timing of pushing during the second stage of labor on postpartum pelvic floor morbidity.

Ellise D. Adams

CURRENT EVIDENCE TO GUIDE PRACTICE, POLICY, AND RESEARCH

264 Telehealth in the Prenatal and Postpartum Periods

The author provides current evidence on telehealth in the prenatal and postpartum periods, including new hybrid care models and the application of telehealth modalities on clinical outcomes.

Summer Sherburne Hawkins

CRITICAL COMMENTARY

276 Call for a More Specific Diagnosis of Infant of a Diabetic Mother to Optimize Neonatal Care

The diagnosis of infant of a diabetic mother is not specific enough because of the varying pathophysiology of diabetes classifications in women who are pregnant and associated neonatal outcomes.

Margaret Dancy and Desi M. Newberry

RESEARCH

286 Three Missed Critical Nursing Care Processes on Labor and Delivery Units During the COVID-19 Pandemic

Three critical missed perinatal nursing care processes were associated with nurses spending less time at the bedside and inadequate unit staffing during the COVID-19 pandemic.

Joyce K. Edmonds, Erin K. George, Stacey E. Iobst, and Debra Bingham

296 Influence of the Quality of Antenatal Care on Early Breastfeeding Initiation and Exclusive Breastfeeding Among Haitian Women

Antenatal care of intermediate quality was positively associated with early breastfeeding initiation among Haitian women.

Sueny P. Lima dos Santos, Ilana Azulay Chertok, and Zelalem T. Haile

309 Knowledge of Postbirth Warning Signs and Postpartum Education Among Women in Ghana

Postpartum education was significantly associated with women's knowledge of postbirth warning signs in Ghana.

Elizabeth Lau, Yenupini Joyce Adams, Roya Ghiaseddin, Kathleen Sobiech, and Ethel Emefa Ehla

METHODS

320 Establishment of a Community Advisory Board to Address Postpartum Depression Among Indigenous Women

Using community-engaged research, this is Phase 1 of a study to improve Indigenous women's PPD care through a community advisory board of tribal stakeholders.

Jennifer L. Heck, Emily J. Jones, and Judy Goforth Parker

ARTICLES ONLINE

Access these and all articles at <http://jognn.org>.

AWHONN POSITION STATEMENTS

e1 The Use of Licensed Practice/Vocational Nurses in Clinical Settings

e5 Nursing Workforce Diversity

On Our Cover:

Albert Weisgerber. Woman From Somalia. 1912. Location: Neue Pinakothek, Bayerische Staatsgemäldesammlungen, Munich, Germany. Photo credit: Bildarchiv Preussischer Kulturbesitz/Art Resource, NY.