

JOURNAL OF
**PSYCHOSOCIAL
NURSING**[®]
AND MENTAL HEALTH SERVICES

January 2018 Volume 56, Number 1

Cited in **MEDLINE/PubMed**

Healio.com **ACCESS FULL TEXT**
at Healio.com/JPN



**Very Late-Onset Schizophrenia-Like
Psychosis: A Clinical Update**

**Qualitative Study of Depression
Literacy Among Korean American
Parents of Adolescents**

**Impulsivity and Sensation-Seeking
Personality Traits as Predictors of
Substance Use Among University
Students**

CNE Earn
Contact
Hours

Original Articles

๑๘ ต.ค. ๒๕๖๑

**37 Very Late-Onset Schizophrenia-Like Psychosis:
A Clinical Update**

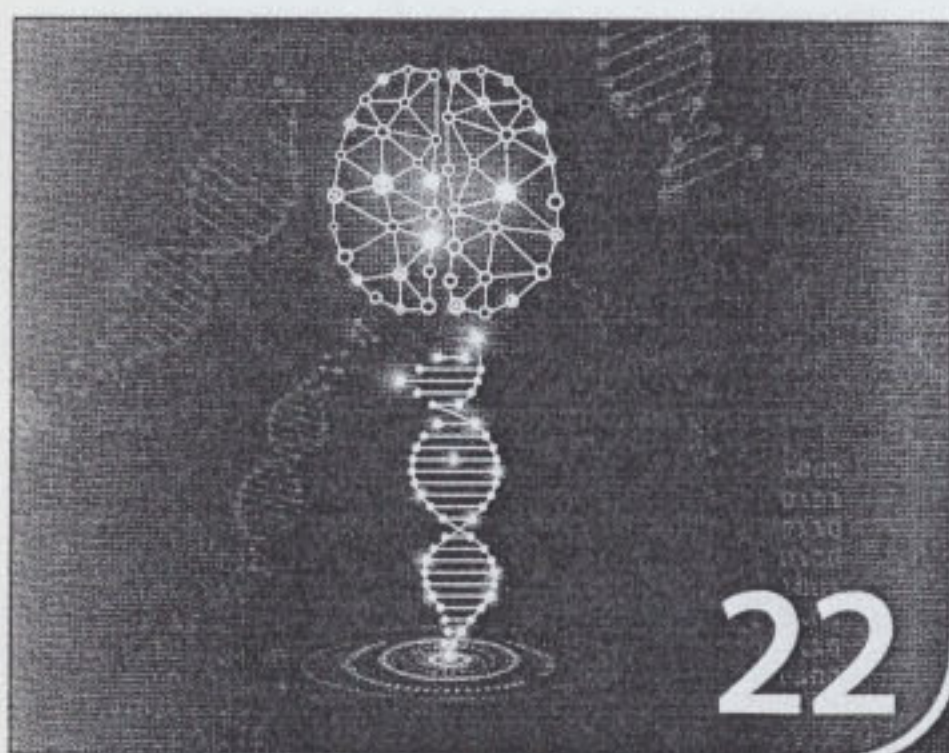
*Elizabeth Cort, MSc; Jennifer Meehan, MSc; Suzanne Reeves, PhD;
and Robert Howard, MD*

**48 Qualitative Study of Depression Literacy Among
Korean American Parents of Adolescents**

*Yoo Mi Jeong, PhD, PMHNP, RN; Linda L. McCreary, PhD, RN, FAAN;
and Tonda L. Hughes, PhD, RN, FAAN*

**57 Impulsivity and Sensation-Seeking Personality
Traits as Predictors of Substance Use Among
University Students**

*Ayman M. Hamdan-Mansour, PhD, MSN, RN;
Khadejah F. Mahmoud, RN, CNS-PN; Ahmad N. Al Shibi, RN, CNS-PN;
and Diana H. Arabiat, PhD, RN*



Sections

22 PSYCHOPHARMACOLOGY

Pharmacogenomics and Psychiatric
Clinical Care

*Russell J. Amato, PhD; Joseph Boland, MS;
Nicole Myer, PhD; Lauren Few, PhD; and
Daniel Dowd, PharmD*

32 AGING MATTERS

End-of-Life Conversations as a
Legacy

Jeanne M. Sorrell, PhD, RN, FAAN

Departments

15 Editorial

**19 Clip & Save: Drug Chart
Year in Review**

21 Thank You to Reviewers

64 CNE Quiz

68 NARSAD Artworks